

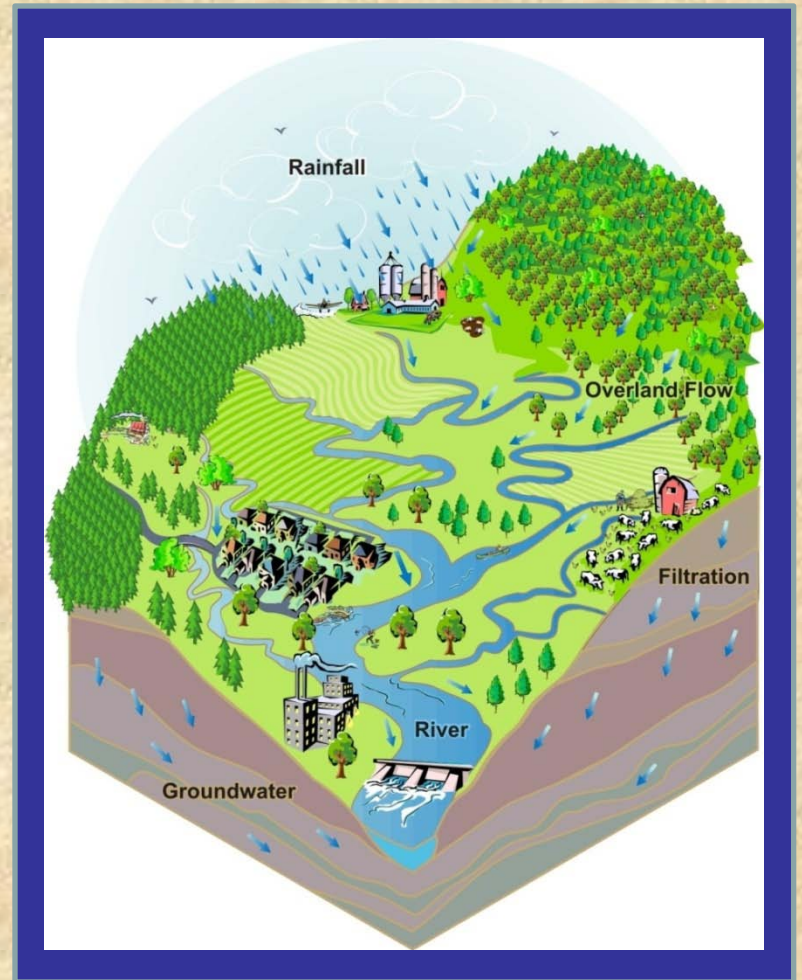


Watershed Planning in Ferson-Otter Creeks

We Save Land. We Save Rivers.

What is a watershed?

- The area of land that catches rain and snow and drains into a stream, river, lake or groundwater.
- How land is used in a watershed effects water quality.
- The watershed has become the planning and management unit of choice for many water resource issues.



Issues of concern



Established 1977



Issues of concern



Issues of concern



Issues of concern



Issues of concern



Issues of concern



Established 1977



Watershed Planning:

- Involves local stakeholders, and facilitates partnerships to protect and improve the health of the watershed.
- Addresses problems that go beyond political and geographical boundaries – problems that are often too costly and complex for just one.
- Creates a useful plan with specific problems and solutions (so stakeholders can apply for grant money to implement projects).



Established 1977



A watershed plan...

- Recommends voluntary methods to protect and enhance water quality.
- Develops an action plan for restorative and preventative efforts.
- Addresses point and nonpoint source pollution issues.
- Focuses on a waterway and its tributaries.



A watershed plan is **NOT**...

- a legally binding document
- a means to designate land uses
- a required part of local comprehensive plans
- a comprehensive plan
- a zoning map
- a land-use map



Established 1977

Nine Elements of Watershed Plans



1. Identify and quantify causes and sources of impairments.
2. Estimate expected load reductions following implementation.
3. Identify BMP's needed to achieve load reductions and critical areas.
4. Estimate needed financial and technical resources.
5. Provide a public information/education component that is designed to change social behavior.
6. Include a schedule for implementing BMPs
7. Identify and describe interim measurable milestones.
8. Establish criteria to determine if load reductions are being achieved.
9. Provide a monitoring component to evaluate the effectiveness of the implementation over time for criteria in number 8.



Regional Criteria

- Develop a vision for watershed land use by evaluating the collection of local comprehensive plans and estimating the cumulative impact on future water quality.
- Set target pollutant-load reductions for impaired waters taking into account both point- and nonpoint sources.
- Consider groundwater protection from both water quality and water quantity perspectives.
- Compare municipal codes and ordinances with the US EPA developed Water Quality Scorecard.

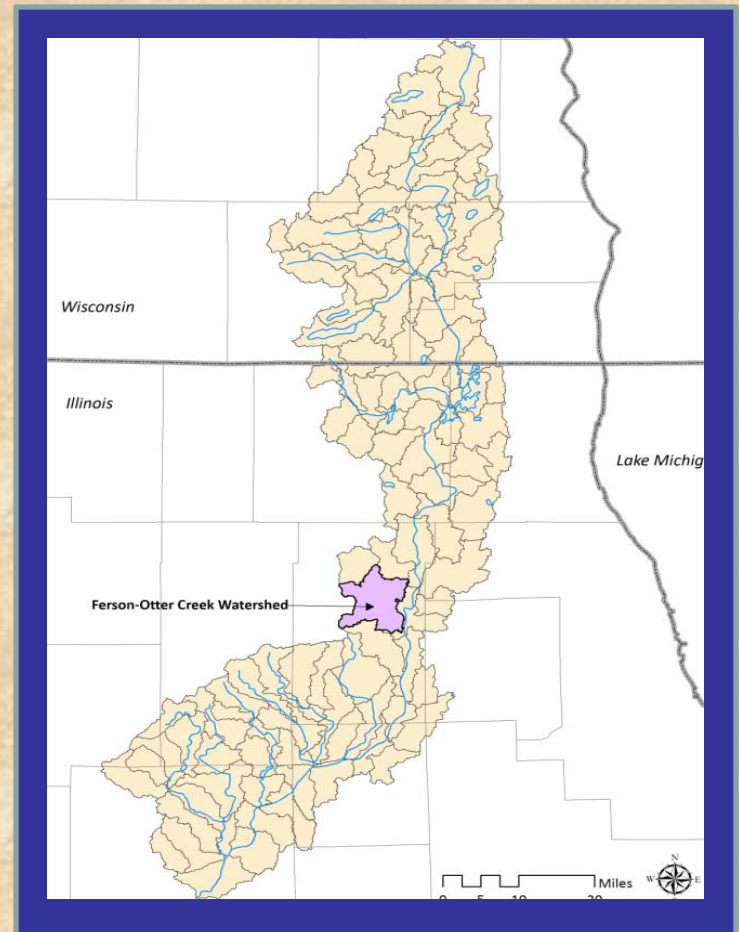


Established 1977



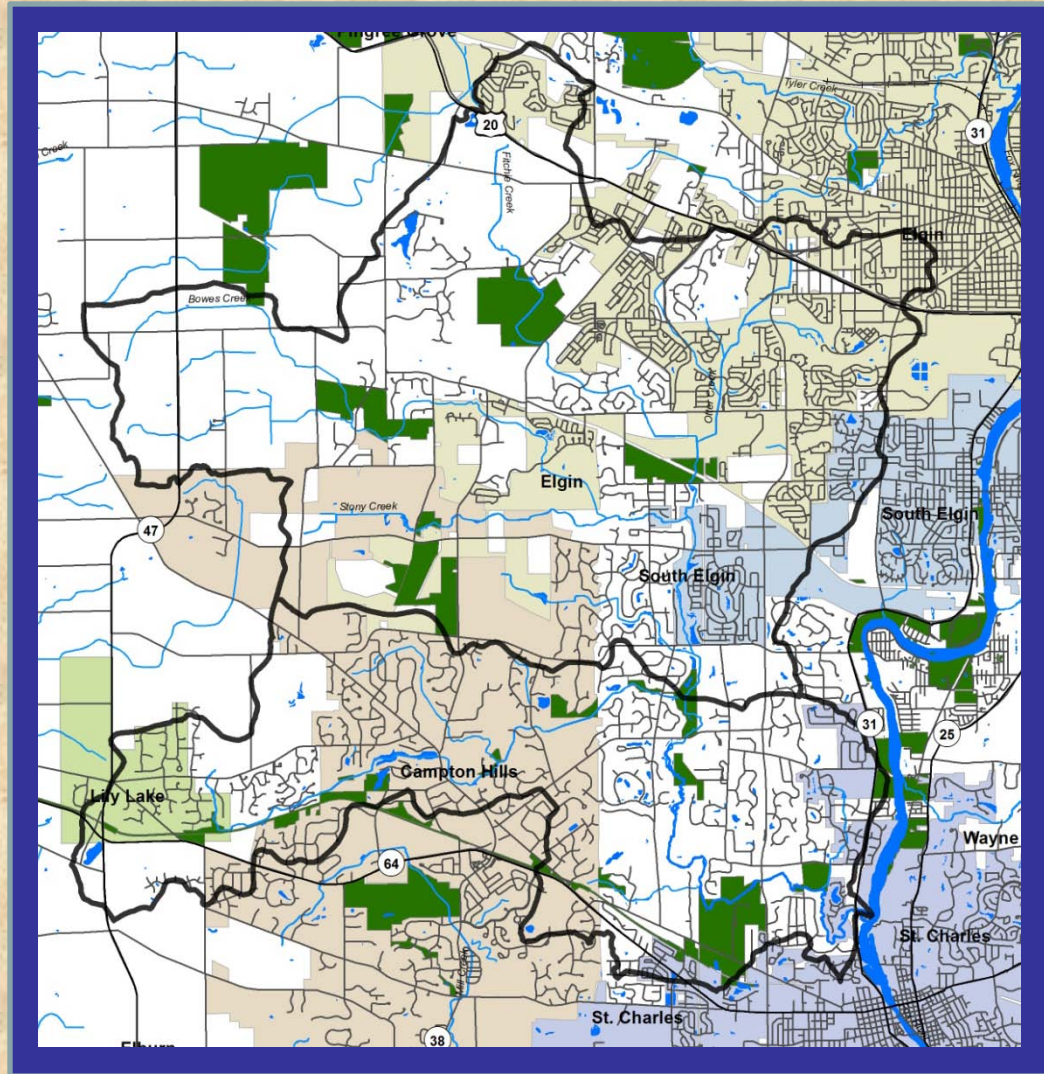
The Fox River Basin

- Third-largest tributary to the Illinois River.
- Abundant recreational opportunities and high quality natural resources attract population growth.
- Urban development and agriculture contribute to impairments.
- Segments found nonsupport for: primary contact, aquatic life, fish consumption, public water supply.



Ferson-Otter Creek Watershed

- Quality of Lower Fox River Basin gives context for our watershed.
- Drainage area is 54 sq. miles; 29% of land developed; Kane County 5th in growth; population is approx. 32,515.
- Campton Hills, Elgin, Lily Lake, St. Charles, South Elgin.



Ferson-Otter Creek Watershed *Conditions*

- Ferson Creek in nonsupport for primary contact due to fecal coliform. (Otter Creek not assessed)
- Ferson Creek and Otter Creek in support for aquatic life.
- Neither creek assessed for secondary contact, fish consumption, or aesthetic quality.

Problem: poor water quality

Pollutants: Fecal coliform, nutrients, metals, chlorides

Stressors: dissolved oxygen, lack of habitat





Illinois Environmental Protection

(IEPA), Bureau of Water, awarded a grant to the Chicago Metropolitan Agency for Planning (CMAP) to

complete the watershed plan through section 604(b) of the Clean Water Act.

The Chicago Metropolitan Agency For Planning is the official regional planning organization for the northeastern Illinois counties of Cook, DuPage, Kane, Kendall, Lake, McHenry, and Will.



Chicago Metropolitan
Agency for Planning

We Save Land. We Save Rivers.



CMAP Contracted With:

The Conservation Foundation (TCF) –
A local not-for-profit land and watershed protection organization, established in 1972. TCF is providing planning coordination and technical assistance.



The Fox River Ecosystem Partnership (FREP) –



One of 41 partnerships of the Illinois Department of Natural Resources' Partners for Conservation Program, established in 1996. FREP is providing outreach and education.

We Save Land. We Save Rivers.



Established 1972

F-O Watershed Plan Timeline

| Date | Meeting Agenda |
|----------------|--|
| September 2010 | Introductions/ Project purpose |
| October 2010 | Watershed Plan Goals and Objectives |
| November 2010 | Watershed Vision |
| December 2010 | Groundwater Protection |
| January 2011 | Ordinance Review Exercise |
| February 2011 | Open Space/ Green Infrastructure Framework |
| March 2011 | Review of Plan Chapter 1/ Impairments/Ordinance Analyses |
| April 2011 | Review of Watershed Inventory Chapter/ FORTRAN (HSPF) pollutant-load model/Load-reduction targets |



F-O Watershed Plan Timeline

| Date | Meeting Agenda |
|----------------|--|
| May 2011 | Plan recommendations/ Project selection |
| June 2011 | Plan recommendations/ Project selection |
| July 2011 | Plan recommendations/Tech and financial assistance needs |
| August 2011 | Public education components |
| September 2011 | Monitoring and Assessment chapter |
| October 2011 | Implementation schedule/ Measurable milestone and successes |
| November 2011 | IEPA feedback/ Finalization of remaining issues |
| December 2011 | Final draft plan approval/ Next steps |



How can I be involved?

- Participate in the planning process by attending monthly stakeholder meetings.
- Provide input and information
 - Comprehensive Plans
 - Ordinances
 - Maps
- Adopt the completed plan and integrate its recommendations as appropriate.



To receive monthly meeting announcements, or if you have questions, please contact Tara Neff: 630-428-4500 x 23; tneff@theconservationfoundation.org.

